

### Features & Benefits

- Attractive Appearance
- Lower Installation Cost
- Lower Carbon Footprint
- No Power Outages
- Easy to Convert to Solar
- 450Lm-500Lm
- Coretemp™ Battery Anti Freeze Technology
- High-strength Precast Concrete



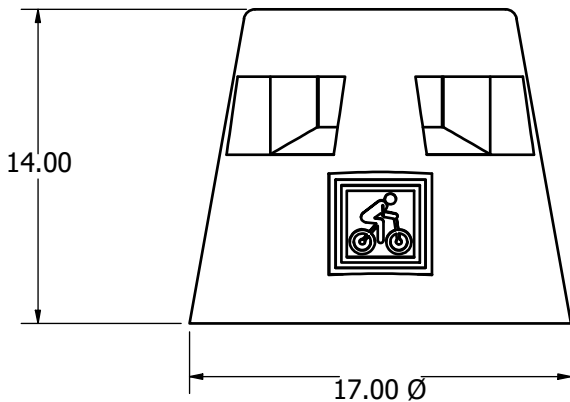
10 Year Available  
15 Year Available



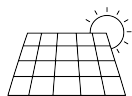
Exclusive Free Battery  
Recycling Program



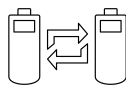
### Certifications



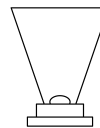
Specifications	
Wattage	2.5 Watts LED
Battery	7.4V 10 AH
Solar Panel	Impact Resistant Monocrystalline 8W
Working Temperature	-40 °F - +140 °F
Material	High Strength Precast Concrete
CCT	3000K/4000K
Lifetime	50,000 Hours
Autonomy	2-3 Rainy Days
Lumens	450Lm-500Lm
Option	PTC Auto heat system ideal for use in cold & snowy climates
Temperature with PTC Warmer	Charge Temperature -40°F to +140°F Discharge Temperature -40°F to +140°F
Temperature Without PTC Warmer	Charge Temperature 14°F to +140°F Discharge Temperature -4°F to +140°F



Monocrystalline  
Solar Module



10AH  
Batteries



Cree Cob  
LED Chip



IP65



AMERICAN COMBAT VETERAN OWNED COMPANY



405-673-8684

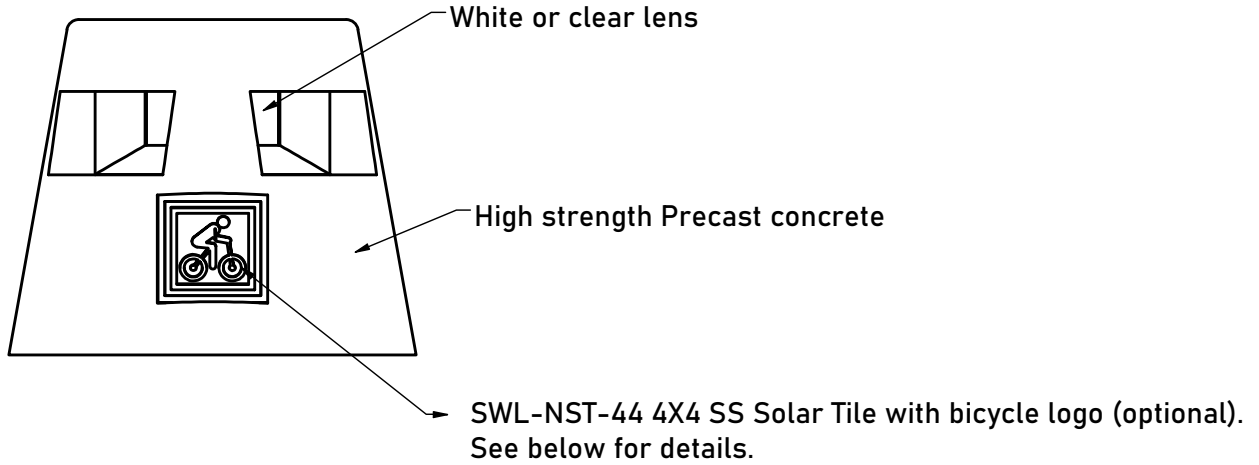
[www.gridshiftsolar.lighting](http://www.gridshiftsolar.lighting)

Corporate: 2803 Broadway Ct. Edmond, OK 73013  
California: 1341 Distribution Way, Suite 20, Vista, CA 92081

Cuesta Sol is a trademark of GridShift Solutions, LLP

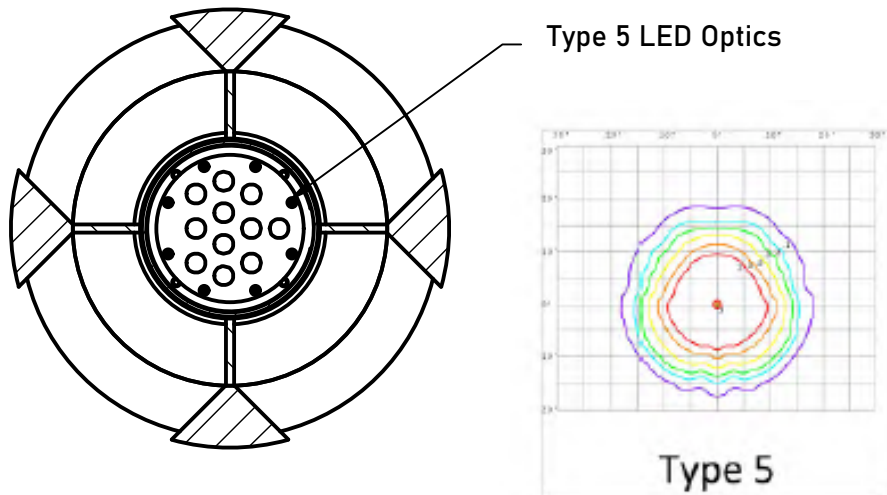


**Details**



**SWL-NST-44**

- Capacitor Driven
- 10+ Year Life
- No Maintenance
- 16+ Hour Operating time
- Customizable logo (see next page for examples)



**AMERICAN COMBAT VETERAN OWNED COMPANY**



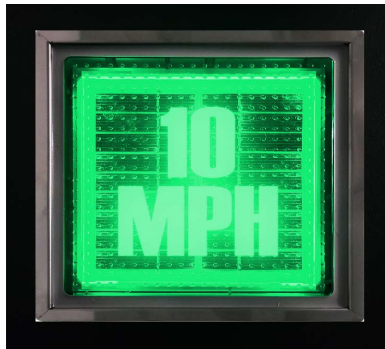
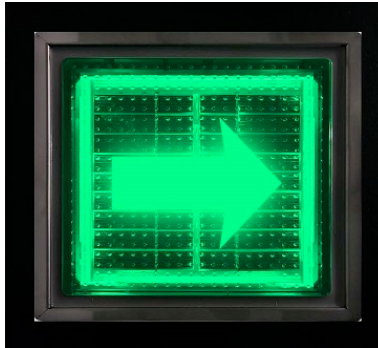
405-673-8684  
[www.gridshiftsolar.lighting](http://www.gridshiftsolar.lighting)

Corporate: 2803 Broadway Ct. Edmond, OK 73013  
 California: 1341 Distribution Way, Suite 20, Vista, CA 92081

Cuesta Sol is a trademark of GridShift Solutions, LLP



SWL-NST44 Logo Examples



Customizable imprinted logo or text available.



AMERICAN COMBAT VETERAN OWNED COMPANY



405-673-8684  
[www.gridshiftsolar.lighting](http://www.gridshiftsolar.lighting)

Corporate: 2803 Broadway Ct. Edmond, OK 73013  
 California: 1341 Distribution Way, Suite 20, Vista, CA 92081

Cuesta Sol is a trademark of GridShift Solutions, LLP

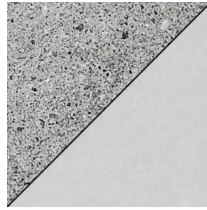
**Precast Concrete Color Options**



Sienna (C-024)



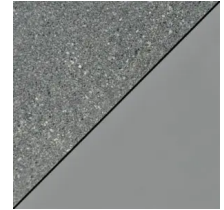
Laredo (C-022)



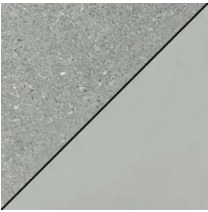
Dover (C-021)



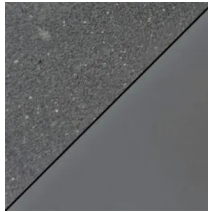
Latte (C-020)



Dark Gray (C-019)



Light Gray (C-018)



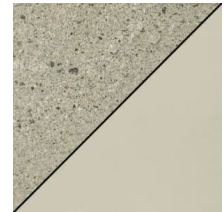
Graphite (C-017)



Crestline (C-016)



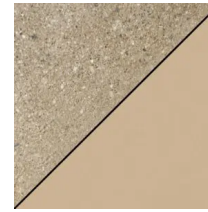
Baja (C-015)



Sage (C-014)



Natural Gray (C-013)



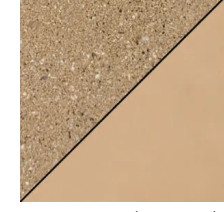
Mesa Tan (C-012)



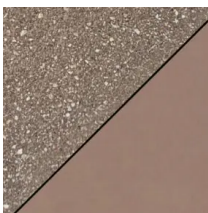
Cream (C-011)



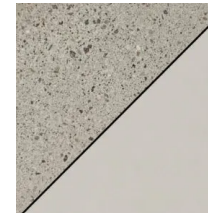
Canyon (C-010)



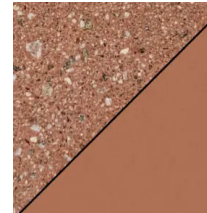
Harvest (C-008)



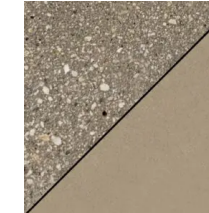
Taupe (C-007)



Antique White (C-006)



Tera Cotta (C-005)



Adobe Brown (C-004)



Brick Red (C-003)



French Grey (C-002)



Moss (C-001)



**AMERICAN COMBAT VETERAN OWNED COMPANY**



405-673-8684

[www.gridshiftsolar.lighting](http://www.gridshiftsolar.lighting)

Corporate: 2803 Broadway Ct. Edmond, OK 73013  
California: 1341 Distribution Way, Suite 20, Vista, CA 92081

Cuesta Sol is a trademark of GridShift Solutions, LLP



Model #	CCT	Option	Precast Concrete Color	Logo Tile
Cuesta Sol CS-BOL-BUL-1714	3000K/4000K	PTC Auto Heat System	See Page 4	See Page 3

Ordering Description Example				
Cuesta Sol CS-BOL-BUL-1714	4000K	PTC	017	Bike

Ordering Description				
Cuesta Sol CS-BOL-BUL-1714				



**AMERICAN COMBAT VETERAN OWNED COMPANY**



405-673-8684  
[www.gridshiftsolar.lighting](http://www.gridshiftsolar.lighting)

Corporate: 2803 Broadway Ct. Edmond, OK 73013  
 California: 1341 Distribution Way, Suite 20, Vista, CA 92081

Cuesta Sol is a trademark of GridShift Solutions, LLP



Wounded Warrior Project