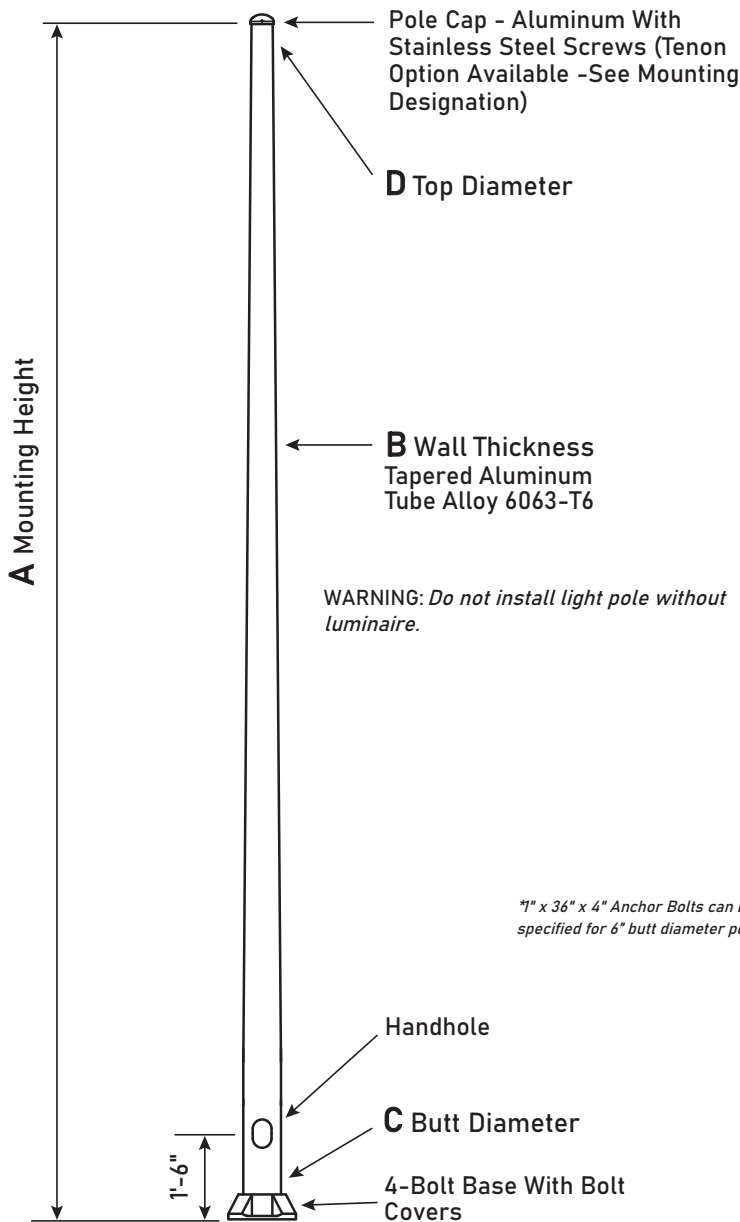


**Round Tapered Aluminum Pole No Arm — 4-Bolt Base**


Dimensions in Inches

C BUTT DIA.	D TOP DIA.	F BOLT CIR. DIA.	G BASE SQ.	H BOLT PROJ.	I BOLT SIZE
4	3	6.5 - 8	7.5	2	.75 x 17 x 3
5	3	7.5 - 8	7.5	2	.75 x 17 x 3
6	4.5	9 - 10	9.75	2.75	.75 x 30 x 3*
7	4.5	10 - 11	10.5	2.75	1 x 36 x 4
8	4.5	11 - 12	11.25	2.75	1 x 36 x 4
9	4.5	12.5 - 14	12.75	2.75	1 x 36 x 4
10 Up To .250"	6	14 - 15	14	3.25	1 x 48 x 4
10 .312"	6	14 - 15	14	3.25	1.25 x 48 x 6

**Pole**

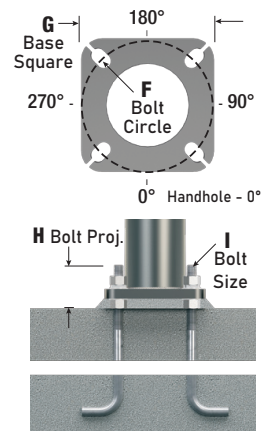
The pole shaft will be constructed of seamless extruded tube of 6063 Aluminum Alloy per the requirements of ASTM B221. The shaft assembly shall be full-length heat treated after base weld to produce a T6 temper.

**Base Style**

4-Bolt Cast Aluminum Base Flange of Alloy 356-T6 with Aluminum Bolt Covers (Alloy 356-F) and Stainless Steel Hex Head Attaching Screws.


**Anchorage**

Anchorage Kit will include four (4) L-shaped Steel Anchor Bolts conforming to AASHTO M314-90 Grade 55. Ten inches (10") of threaded end will be galvanized per ASTM A153. Kits will contain eight (8) Hex Nuts, four (4) Lock Washers, and eight (8) Flat Washers (all components Galvanized Steel). A paper bolt circle template will be provided.


**Handhole**

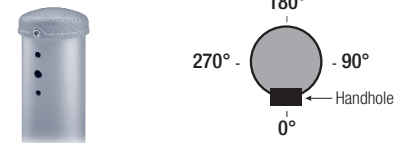
**4"-5" Butt Diameters** - 2" x 4" Handhole with curved Lap Style Aluminum Door and two (2) SS Self-Tapping Attaching Screws. A Grounding Provision incorporating a tapped 1/4"-20NC hole is provided.

**6" Butt Diameter** - Reinforced, 3" x 5" curved Cast Aluminum Frame (Alloy 356-T6) with Aluminum Door and two (2) SS Hex Head Screws. A Grounding Provision incorporating a 3/8" diameter hole is provided opposite the Handhole.

**7"+ Butt Diameters** - Reinforced, 4" x 6" curved Cast Aluminum Frame (Alloy 356-T6) with Aluminum Door and two (2) SS Hex Head Screws. Reinforced Frame will contain a tapped 3/8"-16NC Grounding Provision.

**Mounting Designation**
**Side Drill Mount**

For Side Drill Mount applications specify luminaire type, quantity and orientation. A Luminaire drilling template must be supplied at time of order.


**Tenon Mount- Welded or Spun**

For Tenon Mount applications specify both Tenon diameter (2.375", 2.875", 3.5", etc.) and length (3", 4", etc.). Tenon style is factory option. Welded Tenon can be specified.


**AMERICAN COMBAT VETERAN OWNED COMPANY**


405-673-8684

[www.gridshiftsolar.lighting](http://www.gridshiftsolar.lighting)
**GRIDSHIFT™**  
SOLAR LIGHTING

 Corporate: 2803 Broadway Ct. Edmond, OK 73013  
California: 1341 Distribution Way, Suite 20, Vista, CA 92081

Cuesta Sol is a trademark of GridShift Solutions, LLP



Wounded Warrior Project

A Mts. Hgt.	B WALL THICKNESS	C BUTT DIAMETER	TOTAL LUM. WEIGHT	MAXIMUM EPA					CATALOG NUMBER
				90	100	110	120	130	
06	0.125"	4	100	17.6	14.2	13.2	11.0	9.2	RTA06B4A4-**
08	0.125"	4	100	11.8	9.4	8.6	7.0	5.8	RTA08B4A4-**
08	0.188"	4	100	17.2	13.8	12.8	10.6	8.8	RTA08D4A4-**
10	0.125"	4	75	8.4	6.6	6.0	4.8	4.0	RTA10B4A4-**
10	0.188"	4	100	12.6	10.0	9.2	7.4	6.2	RTA10D4A4-**
10	0.125"	5	100	16.6	13.0	12.2	10.0	8.2	RTA10B5A4-**
10	0.188"	5	100	24.6	19.6	18.2	15.2	12.6	RTA10D5A4-**
12	0.125"	4	50	6.4	4.8	4.4	3.4	2.6	RTA12B4A4-**
12	0.188"	4	85	9.6	7.4	6.8	5.6	4.4	RTA12D4A4-**
12	0.125"	5	100	12.6	10.0	9.2	7.4	6.0	RTA12B5A4-**
12	0.156"	5	100	16.0	12.6	11.6	9.6	7.8	RTA12C5A4-**
12	0.188"	5	100	19.2	15.2	14.2	11.6	9.6	RTA12D5A4-**
14	0.125"	4	25	4.8	3.6	3.2	2.4	1.8	RTA14B4A4-**
14	0.188"	4	60	7.6	5.8	5.2	4.0	3.2	RTA14D4A4-**
14	0.125"	5	90	10.0	7.6	7.0	5.6	4.4	RTA14B5A4-**
14	0.156"	5	100	12.8	9.8	9.0	7.4	6.0	RTA14C5A4-**
14	0.188"	5	100	15.4	12.0	11.2	9.0	7.4	RTA14D5A4-**
16	0.188"	4	35	6.0	4.4	4.0	3.0	2.2	RTA16D4A4-**
16	0.125"	5	60	8.0	6.0	5.4	4.2	3.2	RTA16B5A4-**
16	0.156"	5	85	10.2	7.8	7.2	5.6	4.6	RTA16C5A4-**
16	0.156"	5	90	9.8	7.4	6.6	5.2	4.4	RTA16C5B4-**
16	0.188"	5	100	12.6	9.8	9.0	7.2	5.8	RTA16D5A4-**
16	0.188"	6	100	24.2	19.0	17.6	14.6	12.2	RTA16D6B4-**
18	0.125"	5	40	6.4	4.6	4.2	3.0	2.2	RTA18B5A4-**
18	0.156"	5	60	8.2	6.2	5.6	4.2	3.4	RTA18C5A4-**
18	0.188"	5	85	10.2	7.8	7.0	5.4	4.4	RTA18D5A4-**
18	0.156"	6	100	16.2	12.4	11.6	9.4	7.8	RTA18C6B4-**
18	0.188"	6	100	20.0	15.6	14.4	11.8	10.0	RTA18D6B4-**
18	0.156"	7	100	24.0	18.8	17.4	14.4	12.0	RTA18C7B4-**
20	0.125"	5	30	5.0	3.4	3.0	2.0	1.4	RTA20B5A4-**
20	0.156"	5	40	6.6	4.8	4.2	3.2	2.2	RTA20C5A4-**
20	0.188"	5	55	8.4	6.2	5.6	4.2	3.2	RTA20D5A4-**
20	0.125"	6	85	10.0	7.4	6.8	5.4	4.4	RTA20B6B4-**
20	0.156"	6	100	13.2	10.0	9.2	7.4	6.2	RTA20C6B4-**
20	0.188"	6	100	16.6	12.8	11.8	9.6	8.0	RTA20D6B4-**
20	0.156"	7	100	20.2	15.6	14.4	11.8	10.0	RTA20C7B4-**
20	0.188"	7	100	24.8	19.6	18.0	14.8	12.4	RTA20D7B4-**
20	0.156"	8	100	28.0	22.2	20.6	17.0	14.2	RTA20C8B4-**
20	0.188"	8	100	34.4	27.2	25.4	21.0	17.6	RTA20D8B4-**
25	0.156"	6	60	8.0	5.6	5.0	4.0	3.2	RTA25C6B4-**
25	0.188"	6	85	10.4	7.6	7.0	5.4	4.4	RTA25D6B4-**
25	0.156"	7	100	13.0	9.8	9.0	7.2	5.8	RTA25C7B4-**
25	0.188"	7	100	16.6	12.8	11.6	9.4	7.8	RTA25D7B4-**
25	0.156"	8	100	19.0	14.8	13.6	11.0	9.2	RTA25C8B4-**
25	0.188"	8	100	23.8	18.6	17.2	14.0	11.8	RTA25D8B4-**
25	0.219"	8	100	28.4	22.2	20.6	17.0	14.2	RTA25E8B4-**
25	0.250"	8	100	32.8	25.8	24.0	19.8	16.6	RTA25F8B4-**
25	0.156"	9	100	25.8	20.2	18.8	15.4	13.0	RTA25C9B4-**
25	0.156"	10	100	33.6	27.0	25.0	20.8	17.4	RTA25C1C4-**
30	0.156"	7	60	8.4	5.8	5.2	4.0	3.0	RTA30C7B4-**
30	0.188"	7	90	11.0	8.0	7.2	5.6	4.6	RTA30D7B4-**
30	0.156"	8	100	13.0	9.6	8.8	7.0	5.6	RTA30C8B4-**
30	0.188"	8	100	16.8	12.6	11.6	9.4	7.6	RTA30D8B4-**
30	0.219"	8	100	20.4	15.6	14.4	11.6	9.6	RTA30E8B4-**
30	0.250"	8	100	23.8	18.4	17.0	13.8	11.6	RTA30F8B4-**
30	0.188"	9	100	23.2	18.0	16.6	13.6	11.4	RTA30D9B4-**
30	0.250"	9	100	32.4	25.6	23.6	19.6	16.4	RTA30F9B4-**
30	0.188"	10	100	30.8	24.4	22.8	18.8	15.8	RTA30D1C4-**
30	0.250"	10	100	42.4	33.8	31.6	26.2	22.0	RTA30F1C4-**
35	0.156"	8	55	8.6	6.0	5.4	4.0	3.0	RTA35C8B4-**
35	0.188"	8	90	11.6	8.4	7.6	5.8	4.6	RTA35D8B4-**
35	0.219"	8	100	14.4	10.8	9.8	7.6	6.2	RTA35E8B4-**
35	0.250"	8	100	17.4	13.0	12.0	9.6	7.8	RTA35F8B4-**
35	0.188"	9	100	16.8	12.8	11.6	9.4	7.6	RTA35D9B4-**
35	0.250"	9	100	24.4	19.0	17.4	14.2	11.8	RTA35F9B4-**
35	0.188"	10	100	23.0	18.2	16.8	13.8	11.4	RTA35D1C4-**
35	0.219"	10	100	27.8	22.0	20.4	16.8	14.0	RTA35E1C4-**
35	0.250"	10	100	32.6	25.8	24.0	19.8	16.6	RTA35F1C4-**
35	0.312"	10	100	41.8	33.4	31.0	25.6	21.6	RTA35G1C4-**

Continued on next page

405-673-8684

[www.gridshiftsolar.lighting](http://www.gridshiftsolar.lighting)

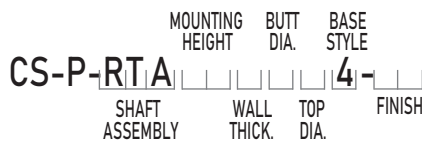
 Corporate: 2803 Broadway Ct. Edmond, OK 73013  
 California: 1341 Distribution Way, Suite 20, Vista, CA 92081

Cuesta Sol is a trademark of GridShift Solutions, LLP

A Mtg. Hgt.	B WALL THICKNESS	C BUTT DIAMETER	TOTAL LUM. WEIGHT	MAXIMUM EPA					CATALOG NUMBER
				90	100	110	120	130	
40	0.188"	8	40	7.8	5.2	4.6	3.2	2.4	RTA40D8B4-**
40	0.219"	8	70	10.0	7.0	6.2	4.6	3.6	RTA40E8B4-**
40	0.250"	8	95	12.4	8.8	8.0	6.2	4.8	RTA40F8B4-**
40	0.188"	9	95	11.8	8.6	7.8	6.0	4.8	RTA40D9B4-**
40	0.250"	9	100	18.2	13.8	12.6	10.2	8.2	RTA40F9B4-**
40	0.188"	10	100	17.0	13.2	12.2	9.8	8.0	RTA40D1C4-**
40	0.219"	10	100	21.2	16.6	15.4	12.4	10.2	RTA40E1C4-**
40	0.250"	10	100	25.2	19.8	18.4	15.0	12.4	RTA40F1C4-**
40	0.312"	10	100	33.0	26.2	24.2	20.0	16.6	RTA40G1C4-**

### Catalog Number System

The catalog number utilizes the following identification system.



### Catalog Number Example

**CS-P-RTA 30 D 8 B 4 - 01**

*Round Tapered Aluminum, 30' Mounting Height, .188" Wall Thickness, 8" Butt Diameter, 4.5" Top Diameter, 4-Bolt Base, Satin Aluminum Finish*

Wall Thickness	Butt Diameter	Top Diameter	Base Style	Finish
B = .125"	4 = 4"	A = 3"	4 = 4-Bolt Base	01 = Satin Aluminum
C = .156"	5 = 5"	B = 4.5"		BA = Black Powder Coat
D = .188"	6 = 6"	C = 6"		BH = White Powder Coat
E = .219"	7 = 7"			BM = Dark Bronze Powder Coat
F = .250"	8 = 8"			BV = Dark Green Powder Coat
G = .312"	9 = 9"			GC = Gray Powder Coat
	1 = 10"			** = Specify Finish

### EPA Notes:

Effective Projected Area (EPA) in square feet. EPA's calculated using wind velocity (mph) indicated in accordance with 2009 AASHTO LTS-5 using a 25-year design life. Maximum EPA is based on the luminaire weight shown. Increased luminaire weight may reduce the maximum EPA. If weight is exceeded, or if other design life or code is required, please contact GridShift Solutions.

### Vibration Damper

If determined necessary, an internal, factory installed, Second Mode Vibration Damper will be provided. Customer specification of the damper is available.



**AMERICAN COMBAT VETERAN OWNED COMPANY**



405-673-8684

[www.gridshiftsolar.lighting](http://www.gridshiftsolar.lighting)

