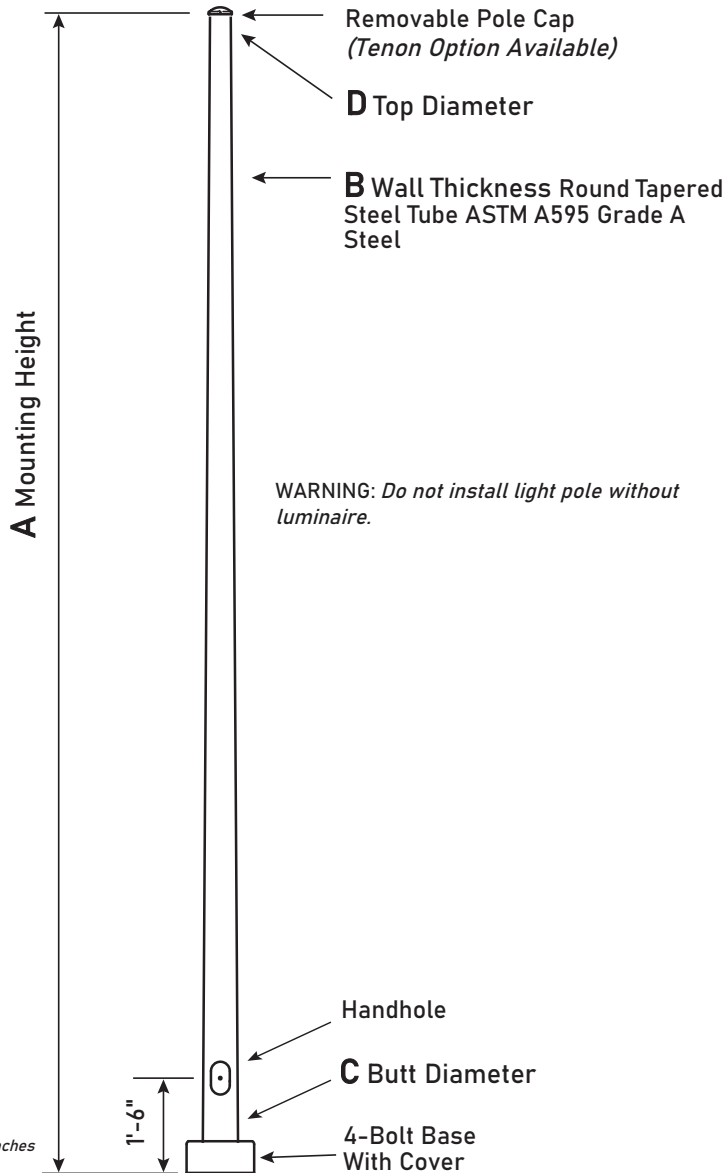


**Round Tapered Steel Pole  
No Arm — 4-Bolt Base**


Dimensions in Inches

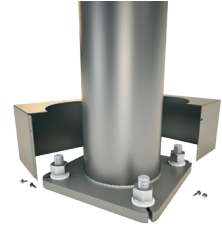
C BUTT DIA.	F BOLT CIR. DIA.	G BASE SQ.	H BOLT PROJ.	I BOLT SIZE
4.5	7.5 - 8.5	8	3.75	.75 x 17 x 3
5.2	8 - 9	8.5	3.75	.75 x 17 x 3
6.1 - 6.6	9.5 - 10.5	10	3.75	.75 x 30 x 3
6.8	10 - 11	10	3.75	.75 x 30 x 3
7.5	10.5 - 11.5	10.5	4.875	1 x 36 x 4
8.0	11 - 12	11	4.875	1 x 36 x 4
8.5	11.5 - 12.5	12	4.875	1 x 36 x 4
9.0 (11 Gauge)	12 - 13	12.375	4.875	1 x 36 x 4
9.0 (7 Gauge)	13 - 14	12.75	5.875	1.25 x 48 x 6
10	13.5 - 14.5	13	4.875	1 x 48 x 4
11	15 - 16	14	5.875	1.25 x 48 x 6
12	16 - 17	15.5	6.75	1.5 x 54 x 6

**Pole**

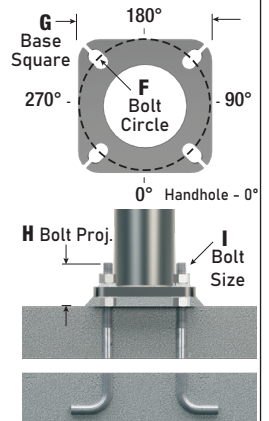
Pole shaft shall be weldable-grade, hot-rolled, commercial quality carbon steel tubing conforming to ASTM A595 Grade A. Options include 11 gauge and 7 gauge. All welds shall conform to AWS D1.2 using ER70S-6 electrodes.

**Base Style**

4-Bolt Steel Base Plate of fabricated hot rolled carbon steel conforming to ASTM A36 or equivalent (36 ksi minimum yield) with 2-piece Base Cover and attaching hardware. Base Cover will be fabricated from metal materials.


**Anchorage**

Anchorage Kit will include four (4) L-shaped Steel Anchor Bolts conforming to AASHTO M314-90 Grade 55. Ten inches (10") of threaded end will be galvanized per ASTM A153. Kits will contain eight (8) Hex Nuts, four (4) Lock Washers, and eight (8) Flat Washers (all components Galvanized Steel). A paper bolt circle template will be provided.


**Handhole**

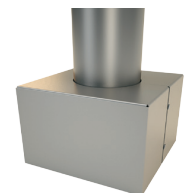
**Up To 5.9" Butt Diameters -** Reinforced, 3" x 5" Handhole with cover, stainless steel screw and backbar. A grounding provision incorporating a tapped 1/2"-13NC hole will be provided.



**6"+ Butt Diameters -** Reinforced, 4" x 6-1/2" Handhole with cover, stainless steel screw and backbar. A grounding provision incorporating a tapped 1/2"-13NC hole will be provided.


**Base Cover**

Square metal powder coated Base Covers are standard on all RTS poles.


**AMERICAN COMBAT VETERAN OWNED COMPANY**


405-673-8684

[www.gridshiftsolar.lighting](http://www.gridshiftsolar.lighting)

A Mtg. Hgt.	B WALL GAUGE	C BUTT DIA.	D TOP DIA.	TOTAL LUM. WEIGHT	MAXIMUM EPA						CATALOG NUMBER
					90	100	110	120	130	140	
10	11	4.5	3.1	370	31.5	25.2	23.5	19.5	16.4	14.0	RTS10B45-4-**-
14	11	5.2	3.1	365	30.4	24.2	22.5	18.5	15.5	13.2	RTS14B52-4-**-
20	11	6.1	3.3	340	25.9	20.4	18.8	15.4	12.8	10.8	RTS20B61-4-**-
20	11	6.6	3.7	385	25.5	20.0	18.5	15.2	12.6	10.7	RTS20B66-4-**-
25	11	6.1	2.6	280	19.0	14.7	13.5	10.8	8.8	7.2	RTS25B61-4-**-
25	11	6.8	3.3	325	19.4	15.0	13.8	11.1	9.1	7.5	RTS25B68-4-**-
30	11	6.8	2.6	275	14.6	11.1	10.1	7.9	6.2	5.0	RTS30B68-4-**-
30	11	7.5	3.3	315	23.3	18.0	16.6	13.4	11.0	9.1	RTS30B75-4-**-
30	11	8	3.8	345	27.4	21.4	19.7	16.1	13.4	11.3	RTS30B80-4-**-
30	11	8.5	4.3	375	31.3	24.7	22.9	18.8	15.8	13.4	RTS30B85-4-**-
30	11	9	4.8	405	35.2	27.9	25.9	21.5	18.1	15.4	RTS30B90-4-**-
30	7	9	4.8	585	57.0	45.6	42.5	35.4	29.9	25.6	RTS30D90-4-**-
35	11	7.5	2.6	265	17.0	13.1	11.9	9.4	7.5	6.0	RTS35B75-4-**-
35	11	8	3.1	295	20.6	15.8	14.5	11.5	9.3	7.6	RTS35B80-4-**-
35	11	8.5	3.6	320	23.9	18.4	17.0	13.7	11.2	9.3	RTS35B85-4-**-
35	11	9	4.1	345	26.9	21.0	19.4	15.8	13.1	11.1	RTS35B90-4-**-
35	7	9	4.1	490	44.9	35.5	33.0	27.2	22.9	19.4	RTS35D90-4-**-
39	11	8	2.5	260	15.8	12.1	11.1	8.7	6.8	5.4	RTS39B80-4-**-
39	11	9	3.5	305	21.9	16.8	15.4	12.3	10.0	8.2	RTS39B90-4-**-
39	7	9	3.5	425	36.6	28.8	26.7	21.9	18.2	15.4	RTS39D90-4-**-
39	11	10	4.5	350	25.4	19.8	18.2	14.9	12.4	10.4	RTS39B10-4-**-
39	7	11	5.5	600	53.7	43.0	40.0	33.2	27.8	23.6	RTS39D11-4-**-

### 2-Piece Shaft Design

A Mtg. Hgt.	B WALL GAUGE	C BUTT DIA.	D TOP DIA.	TOTAL LUM. WEIGHT	MAXIMUM EPA						CATALOG NUMBER
					90	100	110	120	130	140	
45	11	10	3.9	285	19.2	14.6	13.4	10.5	8.5	7.0	RTS45B10-4-**-
45	7	11	4.9	510	41.1	32.5	30.3	24.9	20.8	17.5	RTS45D11-4-**-
45	7	12	5.9	600	57.9	47.3	44.4	37.1	31.7	26.7	RTS45D12-4-**-
50	11	10	3.2	250	15.7	11.5	10.3	7.9	6.0	4.7	RTS50B10-4-**-
50	7	11	4.2	495	34.4	26.9	24.7	20.9	16.7	13.9	RTS50D11-4-**-
50	7	12	5.2	525	41.2	33.0	30.9	25.6	21.9	18.7	RTS50D12-4-**-

### EPA Notes:

Effective Projected Area (EPA) in square feet. EPA's calculated using wind velocity (mph) indicated in accordance with 2009 AASHTO LTS-5 using a 25-year design life. Maximum EPA is based on the luminaire weight shown. Increased luminaire weight may reduce the maximum EPA. If weight is exceeded, or if other design life or code is required, please contact GridShift Solutions.

### Vibration Damper

If determined necessary, an internal, factory installed, Second Mode Vibration Damper will be provided. Customer specification of the damper is available.

### Mounting Options

#### Side Drill Mount

Includes removable pole cap. NOTE: A luminaire drilling template must be supplied at time of order.

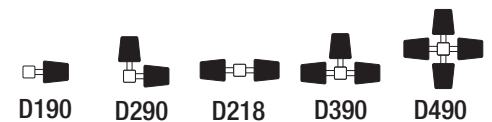


#### Tenon Mount

For Tenon Mount applications specify both Tenon diameter and length.



### Drill Mount Options



### Electrical Box



Box Only



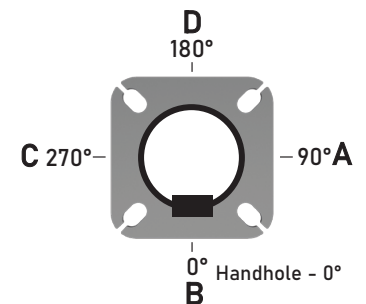
GFI Duplex GFI Receptacle with Cover



GFI Duplex GFI with In-Use Cover

Note: GFI Options must be specified in Accessories.

### Pole Orientation



AMERICAN COMBAT VETERAN OWNED COMPANY



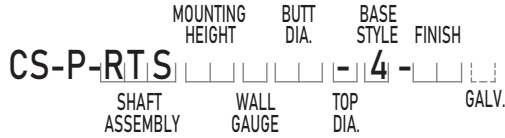
405-673-8684

[www.gridshiftsolar.lighting](http://www.gridshiftsolar.lighting)



### Catalog Number System

The catalog number utilizes the following identification system.



### Catalog Number Example

**CS-P-RTS 30 B 80 - 4 - BM**

*Round Tapered Steel, 30' Mounting Height, 11 Gauge, 8" Butt Diameter, Tapered, 4-Bolt Base, Dark Bronze Powder Coat Finish.*

**CS-P-RTS**

**RTS - ROUND TAPERED STEEL POLE**

HEIGHT	GUAGE	BUTT DIA.	TOP DIA.	BASE STYL	FINISH	MOUNTING OPTIONS	ELECTRICAL BOX*	ACCESSORIES/OPTIONS*	
10 = 10'	<b>B =</b>	45 = 4.5"	"X"	<b>4 =</b>	<b>POWDER COAT COLORS</b>	<b>DRILL MOUNT</b>	<b>FA - 30" Up, "D"</b>	<b>C12 - Threaded 1/2" Coupling**</b>	
14 = 14'	11 Gauge	52 = 5.2"	<i>See Product Information Table For Top Diameter Dimension</i>	4-Bolt Base	<b>BA - Black Powder Coat</b>	<b>D000 - No Drilling</b>	<b>FB - 30" Up, "B"</b>	<b>C34 - Threaded 3/4" Coupling**</b>	
20 = 20'	<b>D =</b> 7 Gauge	61 = 6.1"			<b>BH - White Powder Coat</b>	<b>D190 - Std. "A"</b>	<b>FC - 30" Up, "A"</b>	<b>C10 - Threaded 1" Coupling**</b>	<b>EHH - Extra Handhole**</b>
25 = 25'		66 = 6.6"			<b>BM - Dark Bronze Powder Coat</b>	<b>D290 - Std. "A" &amp; "D"</b>	<b>FD - 30" Up, "C"</b>	<b>GF1 - Duplex GFI Receptacle (WR) with Cover</b>	<b>GF2 - Duplex GFI (WR) with In-Use Cover</b>
30 = 30'		68 = 6.8"			<b>BV - Dark Green Powder Coat</b>	<b>D218 - Std. "A" &amp; "C"</b>	<b>FE - 36" Up, "D"</b>	<b>FF - 36" Up, "B"</b>	<b>LAB - Less Anchor Bolts</b>
35 = 35'		80 = 8"			<b>GC - Gray Powder Coat</b>	<b>D312 - Std. 60°, 180° &amp; 300°</b>	<b>FG - 36" Up, "A"</b>	<b>FI - 24" Up, "D"</b>	<b>LPC - Less Pole Cap</b>
39 = 39'		85 = 8.5"			<b>SC - Special Colors*</b>	<b>D390 - Std. "A", "D", &amp; "C"</b>	<b>FH - 36" Up, "C"</b>	<b>FK - 24" Up, "A"</b>	<b>PAB - Pre-shipped Anchor Bolts</b>
45 = 45'		90 = 9"			<b>GALVANIZED</b>	<b>D490 - Std. "A", "B", "C", &amp; "D"</b>	<b>FI - 24" Up, "D"</b>	<b>FL - 24" Up, "C"</b>	<b>VDA - Vibration Damper</b>
50 = 50'		10 = 10"			<b>00G - Galvanized Only</b>	<b>DCUS - Custom*</b>	<b>FL - 24" Up, "C"</b>	<b>FZ - Custom**</b>	
		11 = 11"			<b>BAG - Black PC Over Galv.</b>				
	12 = 12"	<b>BHG - White PC Over Galv.</b>							
		<b>BMG - D. Bronze PC Over Galv.</b>							
		<b>BVG - D. Green PC Over Galv.</b>							
		<b>GCG - Gray PC Over Galv.</b>							
		<b>SCG - Special PC Over Galv.*</b>							
					<b>TENON</b>				
					<b>T203 - 2-3/8" O.D. x 3"</b>				
					<b>T204 - 2-3/8" O.D. x 4"</b>				
					<b>T304 - 2-7/8" O.D. x 4"</b>				
					<b>T356 - 3-1/2" O.D. x 6"</b>				
					<b>T406 - 4" O.D. x 6"</b>				
					<b>TCUS - Custom Tenon**</b>				
						<i>* GFI Receptacle Options Available (Specify in Accessories)</i>			
						<i>** Specify Height and Orientation</i>			
							<i>* Add all that apply (Example: CPL-LAB-VDA) ** Specify Location</i>		

*Powder Coated, Galvanized or Powder Coated over Galvanized Finish Per Customer Specification.*



**AMERICAN COMBAT VETERAN OWNED COMPANY**



405-673-8684

[www.gridshiftsolar.lighting](http://www.gridshiftsolar.lighting)

