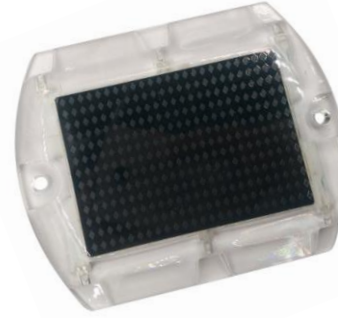
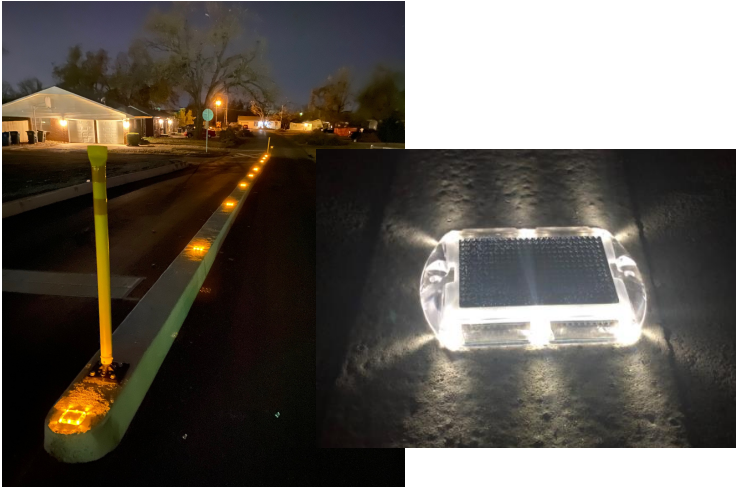


Project:
Quantity:
Notes:
Type

Performance

Charge Time	12 Hours
Operating Time	40 Hrs Steady / 140 Hrs Flashing
Expected Life	5+ yrs



	Solar Module Size	3.07" x 2.17"
	Solar Maximum Output Power	0.375W
	Solar Operating Current	150mA
	Solar Voltage	2.5V
	LED Size	Ø5 LED
	LED Current	20mA per each
	LED Operating Current	6mA (4PCS)
	LED Voltage	3V, 2V
	LED Quantities	6 pcs
	Lithium Ion Battery	3.2V, 500mA

General

Warranty	2 Year Full Replacement
Housing	Polycarbonate
Water Proof Rating	IP68
Dimensions	Ø 4.49" x 3.54" x .43"
Weight	120g
Load Capacity	>10T



- Optional peel & stick butyl pads make installation quick and easy. Just peel and place!

How to specify:

Model	Function	Color	Option
SWL-SMPM	S-Steady F- Flash	R-Red G-Green B-Blue Y-Yellow W-White	BP-Include peel and stick Butyl Pads (see above)

Example: SWL-SMPM-SW
SWL-SMPM, Steady, White
(For Bi-Directional, specify 2 colors. I.e. Red/White =RW)



AMERICAN COMBAT VETERAN OWNED COMPANY



405-673-8684

www.gridshiftsolar.lighting

Corporate: 2803 Broadway Ct. Edmond, OK 73013
California: 1341 Distribution Way, Suite 20, Vista, CA 92081

Solaright is a trademark of GridShift Solutions, LLP

